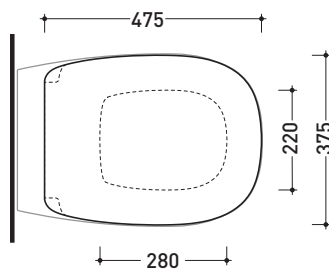


BNCW03

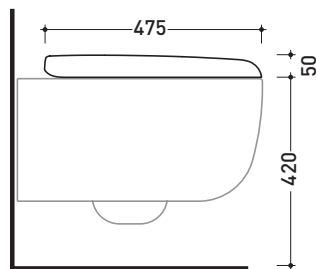
Soft-closing thermosetting wrapping seat & cover
with **QUICK-RELEASE HINGES**

Complements: Bonola wall hung wc (BN118)
Bonola wall hung wc goclean (BN118G)

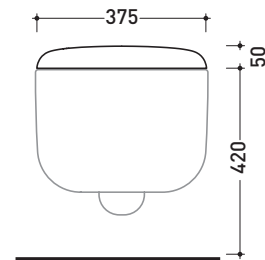
Package dim. 55 x 40 x 7 | Weight 3,8 kg | Pz. Pallet n° -



vista zenitale / zenital view



vista laterale / lateral view



vista frontale / frontal view

sizes in mm

THERMOSETTING: glossy finish



white black

matt finish



milky white carbone lava grey argilla