

# Si

# → FLAMINIA.

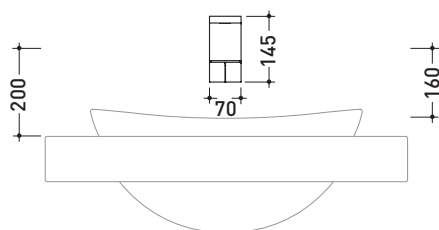
design **ALEXANDER DURINGER** and **STEFANO ROSINI** 2005

## SI2042D Si Down

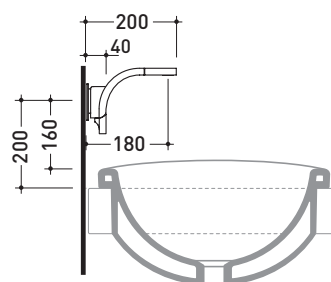
Wall-mounted dual controls basin mixer  
(stop&go drain included)

Complements: **Line accessories TWO**  
**Line accessories HOOP**

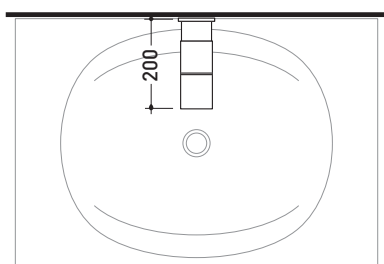
Package dim. **40 x 26 x 14 cm** | Weight **3,5 kg** | Pz. Pallet n° -



vista frontale / frontal view



vista laterale / lateral view



vista zenitale / zenital view

sizes in mm

**BRASS:** glossy finish



chrome

<http://www.ceramicaflaminia.it/en/products/314-si>

©ceramicaflaminiaspa - All rights reserved. Unauthorized copying, publication, reproduction as well as partial reproduction are prohibited

june 2019



